

## What should I already know?

- Living things need food to grow and to be strong and healthy.
- Plants can make their own food, but animals cannot.
- To stay healthy, humans need to exercise, eat a healthy diet and be hygienic.
- Animals, including humans, need food, water and air to stay alive.

## Baines Endowed VC Primary School Thornton-Cleveleys

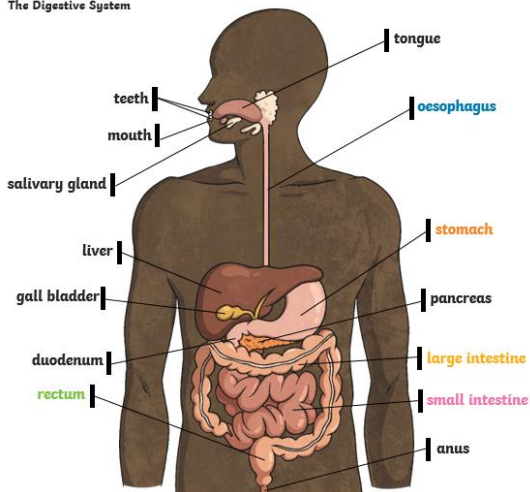
'Reaching Up'

## Animals including Humans (Science)

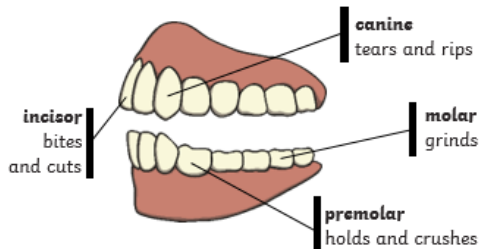
Year 4

### Knowledge

The Digestive System

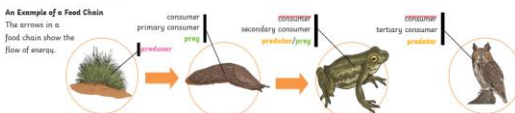
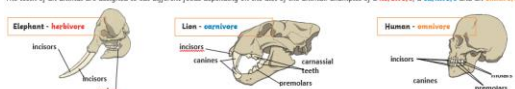


### Human Teeth and Their Functions



Some people have wisdom teeth but they have no function now.

The teeth of an animal are designed to eat different foods depending on the diet of the animal. Examples of a herbivore, a omnivore and an omnivore skull.



### Skills

- **Animals including humans**
  - describe the simple functions of the basic parts of the digestive system in humans
  - identify the different types of teeth in humans and their simple functions
  - construct and interpret a variety of food chains, identifying producers, predators and prey
    - comparing the teeth of carnivores and herbivores, and suggesting reasons for differences;
    - finding out what damages teeth and how to look after them
    - drawing and discussing their ideas about the digestive system and comparing them with models or images.

### Vocabulary

<b>digest</b>	Break down food so it can be used by the body.
<b>oesophagus</b>	A muscular tube which moves food from the mouth to the stomach.
<b>stomach</b>	An organ in the digestive system where food is broken down with stomach acid and by being churned around.
<b>small intestine</b>	Part of the intestine where nutrients are absorbed into the body.
<b>large intestine</b>	Part of the intestine where water is absorbed from remaining waste food. Stools are formed in the large intestine.
<b>rectum</b>	Part of the digestive system where stools are stored before leaving the body through the anus.
<b>herbivore</b>	An animal that eats plants.
<b>carnivore</b>	An animal that feeds on other animals.
<b>omnivore</b>	An animal that eats plants and animals.
<b>producer</b>	A plant that produces its own food.
<b>predator</b>	An animal that hunts and eats other animals.
<b>prey</b>	An animal that gets hunted and eaten by another animal.